

Winter 2018-2019

# *The Acorn*

Quarterly Newsletter of Emanuel's Lutheran Church



## Seasons of Thanks & Seasons of Giving

BY PASTOR MARCUS

"Seasons of Thanks & Seasons of Giving." I think that is a fitting title for the time and place in our calendars we are soon to be entering. It seems that as the year draws closer to its end, the calendar fills up immensely with end of the year holidays and spectacles. I saw a small photo online the other day that stated, "Halloween happens on October 31<sup>st</sup>. Christmas music begins on November 1<sup>st</sup>." You can walk into any large home improvement store and see that phenomenon at work. Our culture and society are so eager to keep trudging forward, always seeking what is next, that we often forget to enjoy the present. We look to the days and weeks ahead, preparing for and gearing up for whatever might be coming our way that the joy of life, right now, is completely skipped over. I know that I might be preaching to the choir on this one, but truthfully, do you get overwhelmed by the pace of life? Maybe even more overwhelmed by the pace other entities in our life want us to run at? I am a person who enjoys moving quickly and enjoys planning far down the road for events that are to come. What I lose in all of that, and I wonder if you do the same, is I lose myself. I don't realize how tired or how distracted or oblivious I am until something forces me to "stop and smell the roses." We will have come out of three distinct seasons of thanks and seasons of giving by the time the new year rolls around and each offers us a chance to pause, to remember the present, give thanks for it, and take a step in a renewed direction. Let's look at each.

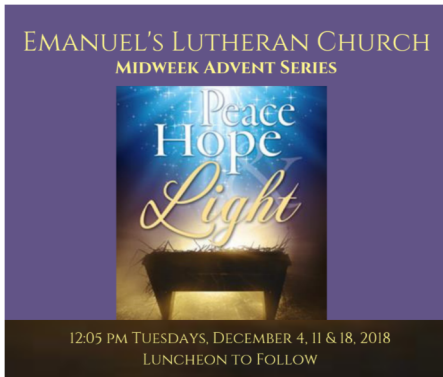
Halloween. Not normally a holiday we often associate with pausing and remembering, but place to the side the commercial version of this ancient day,

and the movies that are often associated with it, and think back to its roots. It is the day and time when we, as baptized children of God, stop, remember, and celebrate the lives of the saints who have gone before us. Dia de Los Muertos, "The Day of the Dead," celebrated throughout Mexico, by those families of Mexican heritage, and in many Central and South American countries, "All Hallows Eve," in Old English tradition, and "Halloween," the Westernized version of these ancient celebrations, are all centered around this three day tradition of Allhallowtide; All Saint's Eve, All Saints Day, and All Souls' Day. Halloween is more than candy and trick-or-treating. It is a time to gather together as family and friends, to share stories and memories of the great cloud of witnesses who have gone before us and who continue to shape us, and it is a time to give the legacy of our story to the next generation. Halloween certainly gives rise to a time and a place where we, those beyond busy members of society, can take a breath to pause and remember the promises of our baptisms, and, as God's children still walking our pilgrimage on Earth, share those promises with others.

Thanksgiving. The name itself ought to give us a blessed pause and give rise to images and memories of time with friends and family, but this holiday, too, falls quickly to the pace of society. Coming from the historical celebrations of the previous year's harvest and sparsely tied, in the United States, to the 1621 feast at Plymouth, Massachusetts following a successful harvest, Thanksgiving has shifted from a season of great thanks to one of hurried cooking, mammoth details for traveling, and even more hectic schedules.

Continued on page 6

# PREPARING FOR CHRISTMAS



**MIDWEEK ADVENT SERIES** is a time of prayer, song, and food as we prepare for Christmas, centering on the devotional text, "Peace, Hope & Light." It begins on **Tuesday, December 4** at 12:05 PM in the Sanctuary. Luncheon to follow in the

Women's Ministry Room provided by the Music Ministry. **Tuesday, December 11** is a special service, "Rejoice and Be Glad! Music, Meditation, and Devotion for the Season" also at 12:05. Luncheon to follow provided by the Food, Fun & Fellowship Group. The last Mid Week service will be on **Tuesday, December 18** at 12:05 with lunch provided by the Sunday School Classes.

Don't miss out on this opportunity to spread holiday cheer and good wishes to area care facilities. We are going **CHRISTMAS CAROLING** on **Sunday, December 16**, gathering at Emanuel's at 1:30 and returning for refreshments in the Women's Ministry Room. No experience necessary to join this fun group of carolers and merry folk.

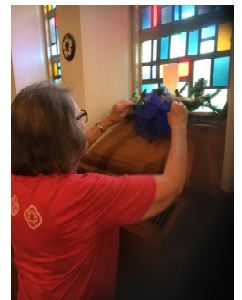
**FOOD, FUN & FELLOWSHIP** will meet on **Sunday, December 16th** at Noon in the Women's Ministry Room. Jeannie Vinyard will make her prize-winning chili for the meal and we will also have tamales. Please bring a dish or dessert to compliment the fun fare!

**HOLIDAY TAMALES SALE** is on! Emanuel's Youth are selling Delicious Tamales this year to help fund their summer activities. Place your order from any youth or in the office. Orders due by **December 9** with pickup of frozen tamales on Dec. 16. Chicken, Bean & Jalapeno, Traditional Pork, and Jalapeno Pork Tamales are only \$12/dz. Thank you for your support!

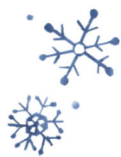
Mike and Zeus Haug were a few of our fabulous **bell ringers** heralding in the season in November and raising funds for our partner in ministry, **The Salvation Army**. (Thanks for the pic, Deb!) Keep our adventurous group in mind next year as schedules are posted.



The Sanctuary is festively and reverently decorated thanks to our resident hall deckers! A joyful shout out to Evelyn Dittmar, Marsha Schroeder, and Elizabeth Jandt for corralling elves and getting us organized.



# EMANUEL'S LUTHERAN CHURCH



*This Christmas, there is a place for you here.*  
Join us as we sing, worship, and celebrate with great anticipation  
Christ's birth during the Advent season.

## 10:30 AM SUNDAY SERVICES

December 2      HOPE  
*First Sunday of Advent*  
December 9      PEACE  
*Second Sunday of Advent*  
December 16      JOY  
*Third Sunday of Advent*  
December 23      LOVE  
*Fourth Sunday of Advent*

## CHRISTMAS EVE

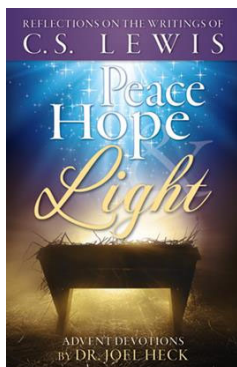
Monday, December 24, 2018  
2:30 A SERVICE OF PEACE  
*Worship and Communion*  
7:00 A SERVICE OF HOPE  
*Family Friendly Candlelight  
Worship and Communion*  
11:00 A SERVICE OF LIGHT  
*Midnight Mass Candlelight  
Worship and Communion*



[www.emanuelslutheranchurch.com](http://www.emanuelslutheranchurch.com)

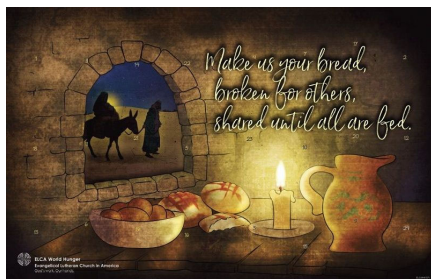
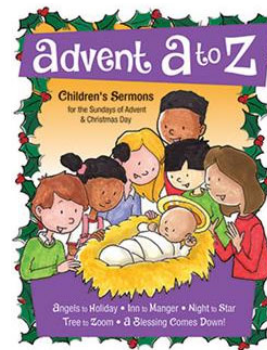
## Advent Resources for Your Home

Available in the Narthex while supplies last. Plenty of calendars available  
if you would like to share with friends.



Deepen your Advent experience this season with insights from C.S. Lewis, one of the most prolific and popular Christian apologists of the twentieth century, followed by reflections from C.S. Lewis scholar Dr. Joel Heck. The daily quotes, Scripture, reflections and prayers will serve as faithful fellow travelers accompanying you through Advent and enriching your Christmas preparations as you await the Savior who comes with peace, hope and light.

Spend time each day of December praying through the alphabetical Advent poems contained in this thoughtful booklet that helps children connect the sights and sounds of the season to the coming of the Christ Child in a fun and familiar way. From Angels and Eggnog to Stars and Wreaths, these prayers by Arden Mead provide a daily guide for children of all ages as they prepare to celebrate Jesus' birthday.



Celebrate the excitement, anticipation and wonder of the birth of Christ with this Advent calendar. Each day is a reminder of the reason for the season with hymns, prayers, Bible verses and info about how ELCA Good Gifts make a difference in the world.

**ADVENT WREATH MAKING** is **Sunday, December 2nd**  
at 9:15 in the Family Life Center. Create a wreath with live  
greens for your family table and light candles together on the four Sundays in Advent as you  
wait for Christmas.



# SPOTLIGHT ON PARTNERS IN MINISTRY

## LOCAL HABITAT PROGRAM CELEBRATES 25 YEARS



This month Guadalupe Valley Habitat for Humanity is celebrating 25 years of giving a “hand up” to local citizens in need of safe, decent, affordable housing. Since its inception in 1993, Guadalupe Valley Habitat has partnered with homeowners to build 26 houses in Seguin. The 27th will be finished by early December.

Habitat’s vision is “a world where everyone has a decent place to live,” and its mission is to “put God’s love into action by bringing people together to build homes, community and hope.” By enabling families

to purchase their home at an affordable price, Guadalupe Valley Habitat helps them realize their dream of home ownership, improves the quality of their shelter and lives, and improves the quality of housing in local neighborhoods.

Habitat houses are not given away for free but, thanks to hundreds of hours of volunteer labor on each house (4,295 hours were contributed in 2017 on two local houses!) and generous donations of money and building materials, the cost of a Habitat house is significantly lower than comparable houses in the area. Homeowner costs are further reduced through zero-interest mortgage loans financed by Guadalupe Valley Habitat. Homeowners also must contribute time and labor to the construction of their house. Each adult member of the homeowner family is required to contribute 200 hours of “sweat equity” at the build site or in other service to Habitat.

Emanuel’s Lutheran Church and its members have faithfully supported Guadalupe Valley Habitat throughout its 25-year history. The late Arthur Preisinger was one of the founders of the local Habitat International affiliate in 1993 and served as its first president. Layne Hoppe has held several leadership positions in the organization through the years, including building supervisor, and currently serves as president. Dennis Sagebiel and the Sagebiel family have generously provided valuable resources to the program, including office space in the early years



and - since 2014 - use of the Sagebiel Building on West Court Street for the Habitat Store. John Schwartz, Garry Miller and other members of the Emanuel's community continue to play key roles in the affiliate, and for the last several years Emanuel's has been the home of Guadalupe Valley Habitat's administrative office, located on the third floor of the education wing.

In recognition of Emanuel's partnership with Guadalupe Valley Habitat, the affiliate named one of its houses built in 2017 "The Emanuel's House." Other local Habitat houses bear the names Preisinger and Sagebiel in gratitude for their services and support.

To learn how you can participate in Guadalupe Valley Habitat's mission of supporting our neighbors in need of better housing, visit the affiliate's website at [www.guadalupevalleyhabitat.org](http://www.guadalupevalleyhabitat.org) , phone 830-401-

0422, or stop by the Habitat Store, located just one block south of Emanuel's. Volunteers at the build sites and at the Store, donations of items for resale at the Store, donations of money and building materials to support the home construction projects, and your prayers of support are always needed and greatly appreciated!

Photos:

- The Emanuel's House at 2316 Lincoln Street, Seguin
- Emanuel's Members Layne Hoppe and Dennis Sagebiel at the dedication of the Sagebiel House on February 20, 2016

Article by Steve Anderson, Emanuel's member and Guadalupe Valley Habitat board member.

## Habitat from the Archives: 2002

Help! These dated photos were found in the Archives Room, but have no names. Do you know any of these, friendly, helpful faces?



## Emanuel's 2018 Giving Tree

### Guadalupe Valley Habitat for Humanity

Thanks to all for your generous donations to Habitat this year! Special thanks to Sandra and Ron Schneider for creating our adorable Giving Tree that was in the

Narthex Nov. 18 - Dec. 2.

Contributions are welcome year round, of course!



Continued from page 1

So, what if we took the time to simplify what it is that we require of ourselves to celebrate? What if we moved ourselves away from bigger is always better or busier is greater, and made the time and space to be who God has created us to be; to be people in relationship with each other first? We quickly become entertainers in the midst of seasons like Thanksgiving and we lose the central point of just being together with family, friends, our church community, and even complete strangers as many take this time of year to serve others. I wonder how transformative this kind of shift would be for our community, culture, and world? It was in the breaking of bread that the disciples' eyes were opened the risen Christ, even the eyes of those two who had walked with him on the road to Emmaus. What kind of eye-opening experience might be awaiting us, at our own tables, if we stop, take a breath, and break the bread of thanksgiving for what God has done for us in Jesus Christ our Lord?

Advent and Christmas. The year comes to an end with a marvelous display of decorating, time together, and church services set to encourage us through another year of mission and ministry. It is unique to point out that while the month calendar is ending during this time of year, the weeks leading up to Christmas, the season of Advent, and the 12 days of Christmas themselves begin the new church calendar year. The lessons on Sundays will center around a new Gospel text and we will again begin the journey of the Christ-child from Bethlehem to Jerusalem. It is this time of spiritual preparation and contemplation on God's inbreaking into the world, the incarnation of Jesus Christ, that I find to be the most gratifying and encouraging. The seasons themselves force us to read passages of journey and mystery, of wonder and excitement. The life we are living around the season become infused with music of silent nights, visitors from fields nearby, and holy families make midnight escapes. These stories, centered on the promise that God came into this world so that all humanity might be drawn to God through Jesus Christ forever, is easily lost in the wrapping (paper) of the seasons. Reclaiming that story, amid this season, is a powerful witness to the purpose of the season. As we walk through this season of giving, let us remember what God has first given us. Let's treasure that gift as something given both for our sake and for the sake of others. This means that we are to cherish it as the most prized gift we have ever been given, while simultaneously sharing it with every single person we

can. That not only reorients our lives, it reminds us that this season, especially, is a true time of thanks and giving.

Three seasons come and go every year. Each one with its own unique history and purpose in our rhythmic life. Let's make this year's time in and among them a place of renewed focus and hope. Let's make our time together as family, friends, and a congregation a place of reminding each other of the grace and love being given in the present. Help one another remember to pause and give thanks for what God has done in Jesus Christ. And together, we will take a renewed step forward in the year that is to come as we continue striving "to be the church God is calling us to be by declaring God's love, serving others, and embracing all."

In God's grip,  
Pastor Marcus

## Council Report

BY KAREN WEINSTEIN, PRESIDENT

***Let us think about each other and help each other to show love and do good deeds***

**Hebrews 10:24**

Taxes and tithes. As we come to the end of 2019, tax statements tend to remind us of the assets with which we may have been blessed either through hard work and/or as gracious and loving gifts. We have not received a reminder in the mail of all the assets we might not have but for the grace and love of God which has been freely given.

Emanuel's Lutheran, as a charitable organization, has also not received any reminders of taxes or tithes owed. Though not taxed, Emanuel's is a family which owns and operates an essentially self-sustaining business. The family and business are housed in an aging structure which is not adequately accommodating an aging membership. With this in mind, following is an update as to where we are going into Emanuel's 149th year of existence.

Currently, Emanuel's is financially sound. We are approximately \$63,000 short of the 2018 budgeted Sunday offerings amount of \$395,100 as of 11/25/18. Members graciously give to specific causes and Emanuel's has been gifted by those who have passed before to cover a 2018 Budget of \$580,481. Looking ahead, Council will address a proposed 2019 Budget of \$658,211. As we near the 2019 annual congregational meeting which, most likely, will be held on Jan-

uary 27, 2019, there will be opportunities for members to meet with Council to discuss the proposed Budget.

Word is being awaited as to when construction on the ramp into the fellowship hall is to begin. The initial start date was to be in December. Koehler Construction, who is to facilitate the ramp construction, has been set back on projects due to the abundance of rain. When construction does begin, the existing elevator tower which spans the chapel area down to the fellowship hall will be demolished. Some evaluation has been done concerning the source of moisture through exterior walls. We should see excavation work around the tower entrance shortly.

Changes will occur within the Sanctuary as a proposal was approved by Council to have Solis Building Specialists mount the Marika sculpture on the wall to the left of the lectern (where the sculpture is currently resting) at a cost of \$4038. On Tuesday, 11/27/18, work started on this project. If possible, the Alpha stained glass window which currently resides on that wall will be moved to the opposite wall to hang with the Omega stain glass window. In conjunction with this project, the banners behind both the lectern and the pulpit will be removed as they are dirty and unsightly when viewed up close. There is the possibility that smaller banners will be created out of the larger banners. In addition, word has been received that the architectural packet concerning the ramp project should be in hand by Friday, 11/30/18. With the signing of agreement, Koehler Construction will be able to obtain building permits to begin building the ramp.

Worship attendance is up with 200 attendees no longer an unusual occurrence. Having 17 youths in the confirmation program is exciting. A candidate for the position of Associate Pastor has been interviewed by the Call Committee. The committee is now recommending that the candidate be interviewed by the church council on December 8th if arrangements can be made. As the congregation continues to grow to include younger families, an associate pastor would be a great asset to team up with Pastor Marcus to build relationships with both the young and older members along with nurturing a growing presence in the community.

As we move into the Advent season, please be reminded that the offering received during the 3 noon Advent services (as well as the 2019 Lenten service offerings) become the basis of Emanuel's gift at the 2019 Synod Assembly. Further, as we move into 2019, take time to review how your time and talents may be utilized. At a

glance, the Altar Guild and Ushers are in need of volunteers. There will be 4 Council vacancies to be filled—and any number of ways to provide respite to those members who have graciously utilized their time and talents over an extended period of time in other endeavors.

No, God has not presented each of us with a tithe or tax statement. He does ask that we love and support each other to include the members of Emanuel's and those of God's greater family outside the pretty box we call our church. We are 3 years into our strategic plan. With God's help and guidance, we will become **“the Church God is calling us to be by declaring God's love, serving others and embracing all”**.

## Stewardship Corner

### Sacrifice: Romans 12:1

“I appeal to you therefore, brothers and sisters, by the mercies of God, to present your bodies as a living sacrifice, holy and acceptable to God, which is your spiritual worship.”

What does it mean to sacrifice something? A word that is sometimes used when speaking of sacrifice is the word, “surrender.” This act is a powerful witness to the faith life God has called us to because it requires us to be vulnerable and open to the work of the Holy Spirit and to the ways in which God might be calling and using us to spread the Good News. The Apostle Paul's words in this verse from Romans challenge us to see our lives as living sacrifices meaning, living in ways that surrender all things that separate us from God to God and passionately seek to live a Christ-centered and faithful life. These can be material possessions sold and money given to charity, as Christ suggests the rich young man in Matthew's Gospel. It can be giving up a work event so that time can be spent with family and friends. It can be job change or promotion turned down so that a spouse or partner can grow in their career. Sacrifice is all around us and as stewards we must continue to ask ourselves, what might we surrender to God so that we might, more fully, experience God's joy and happiness?

# BOOK REVIEW

## THE FARM WENDELL BERRY

Drawings by Carolyn Whitesel

The newly released book *The Farm* by Wendell Berry is a worthwhile purchase simply for its beauty. A trade reprint of the hard-to-find letterpress edition by Kentucky's Larkspur Press, this new book retains the elegance of the original in both its design and its monochrome drawings by Carolyn Whitesel.

The sole content of the book is the long poem that gives the book its title, which is at once a depiction of a farm and its workings (presumably based on Berry's own farm), and rich wisdom on how to run a farm sustainably – from maintaining woodlands to cultivating cornfields to keeping a garden.

The intermingling of biodiverse relationships between humans, land, plants, and animals in this poem, is reminiscent of what I experienced on my grandparents' small-to-medium-sized Iowa farm a generation ago. Berry's vision of the farm, while frank about the intensive labor it requires ("There is no end to work — /... / One job completed shows / Another to be done."), is compelling in the image of farm life that it conjures.

Like most good books, *The Farm* poses more questions than it answers. What, for instance, is the role of this sort of small farm in an increasingly urban world? To what extent is Berry's vision nostalgic for an age that can never be recovered, or to what extent is he offering necessary wisdom for the sustainable future of creation? Is there wisdom here about humanity, other creatures, and the land that we might draw upon in contexts other than the small, rural family farm?

It seems at the very heart of this work, Berry is describing a way of being, one rooted in the love of and care for a particular place:

Be thankful and repay  
Growth with good work and care.  
Work done in gratitude,  
Kindly, and well, is prayer.  
You did not make yourself,  
Yet you must keep yourself  
By use of other lives.  
No gratitude atones  
For bad use or too much.

This is not work for hire  
By this expenditure  
You make yourself a place;  
You make yourself a way  
For love to reach the ground.  
In its ambition and  
Its greed, its violence,  
The world is turned against  
This possibility,  
And yet the world survives  
By the survival of  
This kindly working love.

This is a vision, deeply rooted in the Christian tradition, is one to which we all – farmers or not – should aspire.

C. Christopher Smith is Senior Editor of The Englewood Review of Books, co-author (with John Pattison) of *Slow Church* (2014), and author of the forthcoming book, *How the Body of Christ Talks: Recovering the Practice of Conversation in the Church* (Spring 2019).

ENGLEWOOD  
REVIEW  
OF BOOKS

Go **tail** it on  
the mountain.



Talk about a transformation! A cow, a couple of goats, a dozen chicks, two pigs, farming tools, seeds, and agricultural training and support can help a family achieve a fresh start. With new tools and techniques, crops will grow stronger than ever. Eggs, milk and meat from the farm animals provide a lifetime of food to eat and sell on the market, helping a family escape the cycle of hunger and poverty- for good.

You may honor or remember a loved one by supporting the ELCA Good Gifts Family Farm. Forms may be put in an envelope with payment and placed in the offering plate or delivered to the church office by Dec. 11th. **Don't forget to come by and get one of the funniest cards you've ever seen to let your loved know you are thinking about them with this kind gift towards a Family Farm!**



# SPOTLIGHT ON EMANUEL'S MINISTRY

## Music Ministry at Emanuel's Lutheran Church

Do you need a place to unwind after a long day at the office. Can you imagine what a musical hot tub would be like? Do you like to chatter merrily with your friends and visit with a vengeance? Do you like to sip on a cup of coffee while you are visiting with a vengeance? Well, if you do, the Emanuel's Music Ministry is the place for you. The top floor of the educational wing really rocks on Wednesday nights as the music ministers arrive for their weekly dose of music making, visiting, and general horseplay.

The week gets off to a rollicking start when the Heavenly Ringers Handbell Choir gathers at 6:30. There is a flurry of activity as the ringers hurriedly find their bells and mark any new music that had been handed out while they weren't looking. There is also much merrymaking. On Sundays in which the ringers play for services, the players arrive early in the morning to get set up in the north transept of the nave (which, by the way, faces south, but that's a long story) to rehearse in their playing environment. They manage to make music and merriment at the same time.

As the church bell chimes 7:30, the Jubilation Singers arrive and stake out their claim on the area. The odd thing is that no matter how careful we are at trying to keep track of our music and our folders and other paraphernalia, you can always count on someone's yelling out, "Hey, where's my folder? I left it right here in the middle of the floor last Sunday. Why isn't it here?" Maybe one day, we will actually get it all together. What, and spoil all the fun? Well, enough joy for one

evening. By the way, the music ministry is blessed with a Verdin Singing Carillon. Our praise of God in music can now be heard across the neighborhood, much to the delight of the neighbors.

I have written about ringing and singing, but what about blowing, beating, and scraping? After all, there must be something for everyone. Our woodwind, brass, and string players get together usually on the 4th Sunday of the month to perform as Instrumental Praise. This group also plays on principal festive days such as Reformation, Thanksgiving, Christmas Eve, and Easter. If you play an instrument and would like to play along with the services, please contact the Director of Music and Worship or another music minister.

Even though I have used a light stylistic tone to write this article, let me hasten to add that none of what these tremendous people do should be taken lightly. Our music ministers love music, love God and love each other very much. They make music as a way of responding positively to God for creating them for giving them life, and for giving them the gift of Jesus Christ as Savior and Redeemer.

The Music Ministry of Emanuel's Lutheran Church hopes that you will consider adding us to your already busy calendar. Maybe we can hope lighting the load. Love is all around.

BY TOM ENGLER, Director of Music and Worship

## Emanuel's celebrates anniversary

*125th year marked with special service*

Originally appearing in the *Seguin Gazette-Enterprise*, p.15, Sunday, January 29, 1995

**T**he bells will chime 125 times at 10:30 a.m. at Emanuel's Lutheran Church this morning to commemorate a year-long celebration of the 125<sup>th</sup> anniversary of the church.

Theme for the year is "God With Us Yesterday, Today, Forever." A special commemorative (sic) service will begin at 10:30 a.m. with Bishop James Bennett of the Southwestern Texas Synod of the Evangelical Lutheran Church of America presiding. He will be assisted by Emanuel's Pastor Stan Sultemeier.

The roots of Emanuel's go deep into the history of the community. During the period of the Republic of Texas and early statehood Texas became a veritable confluence of cultures. The majority of the immigrants who came to the Seguin area were German and many of them Lutheran.

The earliest known Lutheran work in Texas dates back to 1850. The Lutheran synod of South Carolina sent a pastor to Texas to survey this new missionary field. In response to his plea for help in this vast new missionary field, two pastors were sent to Texas from the Mission Institute in Basle, Switzerland. Within a year, one of them, Pastor Theobald Kleis, established a congregation and built a

small church in Neighborsville, near New Braunfels. It was named St. Martin's. This church has special significance for Emanuel's for its early pastors were the first pastors to conduct periodic services in Seguin. And so, the history of Emanuel's dates back to 1851.

It was not until the later part of 1869 when the first Evangelical Lutheran Synod sent Pastor Johannes Wohlschlegel as a full time missionary to the Seguin area that any real progress toward the establishment of a congregation was made. He preached his first sermon here on Sept. 1, 1869.

During the remaining months of the year he gathered a small group of 19 families, determined to form a congregation. A committee was chosen to prepare a constitution. This constitution was adopted on Jan. 30, 1870, the fourth Sunday after Epiphany. The original name of Emanuel's Lutheran was Deutsche Evangelisch Lutherische Eman

the original church was completed in less than six months. The first two room parsonage was built next to the church in 1877 by the current pastor using his own means. This same site was the home of the second church building dedicated in 1913, the parish hall dedicated in 1929, and the existing church with expanded educational facilities completed in 1956. A new parsonage was built



THE SECOND CHURCH building of Emanuel's Lutheran Church as it stood in 1913 as pictured. (Photos courtesy of Leon Studios)

on West Mountain Street at that time.

Over the 125 years, Emanuel's has not only been a landmark, but through the active concern of its pastors and membership for the well being of the city, it has made important contributions to the development of this community. German Lutheran immigrants clearly manifested tremendous importance they attached to Christian elementary education for many years before the first public school was opened in Seguin in 1897. At great personal sacrifice to members and pastors, who were also teachers, the first church became the "cradle of public schools" in Seguin, a "free school" arrangement that lasted from 1870-1904.

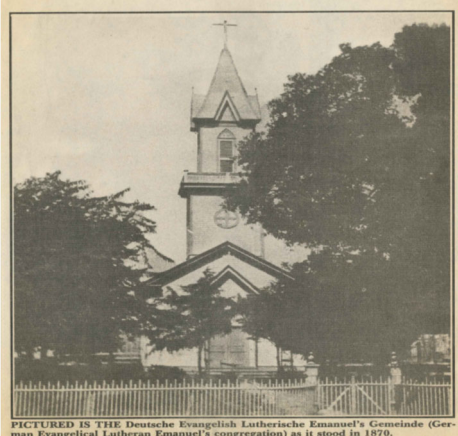
Emanuel's began serving the community with a kindergarten program in

***Over the 125 years, Emanuel's has not only been a landmark, but through the active concern of its pastors and membership for the well being of the city, it has made important contributions to the development of this community.***

uel's Gemeinde, or German Evangelical Lutheran Emanuel's Congregation.

In the days after the meeting, a building site was purchased. Three weeks later the work got under way and

***'The bells will chime'***



PICTURED IS THE Deutsche Evangelisch Lutherische Emanuel's Gemeinde (German Evangelical Lutheran Emanuel's congregation) as it stood in 1870.

1949. A nursery school was added in 1971. The Montessori approach to learning began in 1978. Today's school with extended day begins at 7:30 a.m. and the academic program runs from 8:30 to 11:30 a.m. each day. Care for the 56 attendees ages two and a half through kindergarten continues until 6 p.m. The present educational facilities are located in the block just north of the current church at 206 N. Travis.

The Summer Youth Enrichment program for young people between first and sixth grade has been enthusiastically participated in by the entire youth of the community for the past two years.

In 1912, the membership of Emanuel's played a major role in bringing Texas Lutheran College to Seguin. The two institutions have enjoyed a close relationship since that time. Prior to the construction of the Chapel of the Abiding Presence on the TLC campus in 1954, most Lutheran students attended Sunday service at Emanuel's, giving the congregation an opportunity to become personally acquainted with many future pastors and the church leaders over the years. In an effort to reach the young men of the community, Emanuel's became actively involved in the Boy Scouts of America program in the United States. With its 60 year participation, it boasts the oldest sponsorship in the Guadalupe area of Texas.

The Ladies Aid was organized in 1899. From its beginnings, this organization has faithfully and effectively served Emanuel's. Its deep concern, sacrificial work and financial contributions continue to offer the incentive for and

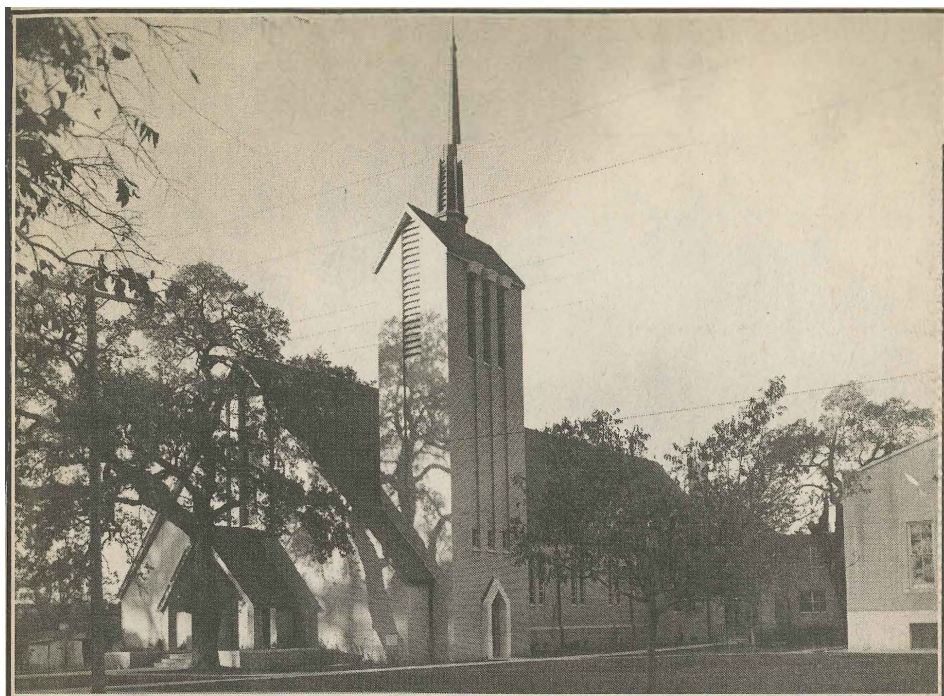
---

***Emanuel's has historically emphasized worship through music and has always maintained a strong music program.***

---

impetus to achieve and progress.

In 1928 the Sunday School and all church societies including the Ladies Aid, the Women's Missionary Society organized in 1926., the Luther League and the Boy Scout program had grown to such an extent that the construction of a parish hall became a necessity. In 1929



**THE CHURCH BUILDING of today was built in 1956, the year this photo was taken.**

an auditorium with a seating capacity of 900 was completed.

The largest assembly hall in Seguin provided facilities for church function, national synod conventions, bazaars, public meetings, lectures, piano recitals, drama and musical productions.

With a lack of classrooms, the continued growth in membership dictated a remodeling of the Parish Hall in 1950. When the new church and educational building were erected in 1956, the old parish hall was connected and incorporated with the new complex.

The congregation is currently and actively pursuing its Faith 2000 program to assure the expansion and renovation of current facilities to better serve the needs of the congregation and growing community.

Faith Lutheran Church was established as a mission congregation of Emanuel's in the 1960's.

Emanuel's has historically emphasized worship through music and has always maintained a strong music program. From the one adult choir of its beginnings, it now includes two adult choirs, one for the 8 a.m. and another for the 10:30 a.m. service; a children's choir; two bell choirs; the Men's Bible Class Choir; and instrumental and vocal ensembles consisting of members of Emanuel's and the community for special celebrations.

The congregation participates in

many charitable programs including the Bounty Barrel and other projects of the Church.

The Rev. Sultemeier currently serves the congregation of 1,400. Approximately 100 of these active members are descendants of Emanuel's founding fathers.

They were recognized during special services last September. In addition to the 8 a.m. and 10:30 a.m. services, a weekly Wednesday service is held at 7:30 p. Mid-week services are held during the Advent and Lenten seasons. Several other special programs will be held throughout the year in celebration of the 125<sup>th</sup> anniversary.

Betty Jean Jones is chairman of the 125<sup>th</sup> anniversary celebration and provided information for this article.

## **Emanuel's 150th Anniversary is just around the corner!**

**Stay tuned for opportunities to celebrate the big event in August of 2020.**

# SPOTLIGHT ON TODAY & TOMORROW

## Life After Loss

The six-week grief support and educational series is designed to give grieving people a safe place to connect with others and remember their loved ones. Attending all six sessions is most beneficial, therefore no new participants are accepted after the 2nd session.

And your ears shall hear a word behind you, saying, *"This is the way, walk in it, when you turn to the right or when you turn to the left."* Isaiah 30:21

Week 1: Overview of Loss  
Week 2: Process of Grief  
Week 3: Healing Memories  
Week 4: Self-Care  
Week 5: Holidays  
Week 6: Moving Forward

Sundays, January 13, 20, 27; February 3, 10, 17, 2019 from 3-5 pm in the Family Life Center on the third floor at Emanuel's. Co-facilitated by Darwin Huartson, M.Div. BBC and Donna Simmons, Director of Congregational Care To save a spot or receive more information, call Donna at 830-379-5046.

## Legacy Planning/Giving

Legacy Planning/Giving is a program lead by John Dellis, Pastor Marcus, and Pastor Darwin Huartson. These programs will be held during the Sunday School hour starting Sunday, Feb 3, 2019 and going through Sunday, Feb 24, 2019 from 9:15-10:15am. Presentations will include information about LifeCare Planning, Planning Your Funeral, Legacy Planning/Giving with John Dellis, and Care Giving with Pastor Darwin Huartson.



## Welcome New Faces!

New Members were welcomed in worship on November 18, 2018. Left: Greg & Gloria; John & Faye; Johnathan & Deanna with John & Abigail. Right: Beth & Eddie; Carmella, Ben, Beth & Kenn.



And there is a BABY in the house! Atticus John Ward arrived on October 24, 2018 at 11:41 a.m. He weighed 8 lbs 12 oz and was 20.5 inches long. Congrats to the Grimm-Ward family!



Pastor Marcus and Emanuel's Youth are all over Central Texas. Fall camps and confirmation activities have kept them busy. Thank you for supporting tamale sales so they can participate in Summer fun, too!



## FIRST QUARTER YEAR C 2018/9 CHURCH YEAR CALENDAR

DATE	SEASON	1st READING	PSALM	2nd READING	GOSPEL
Dec 2	1 Advent	Jer 33:14-16	Ps 25:1-10	1 Thess 3:9-13	Luke 21:25-36
Dec 9	2 Advent	Mal 3:1-4	Luke 1:68-79	Phil 1:3-11	Luke 3:1-6
Dec 16	3 Advent	Zeph 3:14-20	Isa 12:2-6	Phil 4:4-7	Luke 3:7-18
Dec 23	4 Advent	Micah 5:2-5a	Luke 1:46b-55	Heb 10:5-10	Luke 1:39-45
Dec 24	Christmas Eve	Isa 9:2-7	Ps 96	Titus 2:11-14	Luke 2: 1-14 [15-20]
Dec 25	Christmas Day	Isa 62:6-12	Ps 97	Titus 3:4-7	Luke 2:[1-7]8-20
Dec 30	1 Christmas	1 Sam 2:18-20,26	Ps 148	Col 3:12-17	Luke 2:41-52
Jan 6, '19	Epiphany of Our Lord	Isa 60:1-6	Ps 72:1-7,10-4	Eph 3:1-12	Matt 2:1-12
Jan 13	Baptism of Our Lord	Isa 43:1-7	Ps 29	Acts 8:14-17	Luke 3:15-17,21-22
Jan 20	2 Epiphany	Isa 62:1-5	Ps 36:5-10	1 Cor 12:1-11	John 2:1-11
Jan 27	3 Epiphany	Neb 8:1-3, 5-6, 8-10	Ps 19	1 Cor 12:12-31a	Luke 4:14-21
Feb 3	4 Epiphany	Jer 1:4-10	Ps 71:1-6	1 Cor 13:1-13	Luke 4:21-30
Feb 10	5 Epiphany	Isa 6:1-8 [9-13]	Ps 138	1 Cor 15:1-11	Luke 5:1-11
Feb 17	6 Epiphany	Jer 17:5-10	Ps 1	1 Cor 15:12-20	Luke 6:17-26
Feb 24	7 Epiphany	Gen 45:3-11,15	Ps 37:1-11, 39-40	1 Cor. 15:35-38, 42-50	Luke 6:27-38

# EMANUEL'S IN THE NEWS

## Thank you for your service, Barbara!

### Seguin ISD says good-bye, honors outgoing school board members



How fun it is to see Emanuel's members in the news. We are so proud of you, Barbara! This photo by Cindy Aguirre-Herrera was on the front page of the Seguin Daily News on November 1, 2018. Here is a taste of the complimentary story:

"Attending their last (Seguin ISD) school board meeting were District 2 Trustee Ishmael Flores, District 5 Trustee Barbara Effenberger and District 7 Trustee Elaina Reihl. ...

"Effenberger ends her time of service after having served six years on the school board. Effenberger say she is honored to have been a part of a wonderful Seguin ISD family.

" 'I have been a lifelong pro-public (school) supporter advocate. I don't have any children of my own but I felt like

this is one way I can contribute to our community. I've really enjoyed my term on the school board and I see a lot of positive things coming up so I'm leaving the board in good hands,' Effenberger said."



I WOULD LIKE TO  
DECORATE THE ALTAR  
WITH POINSETTIAS

Given in MEMORY of

Given in HONOR of

GIVEN BY:

Number of Poinsettias Ordered: \_\_\_\_\_



I WOULD LIKE TO PROVIDE A FAMILY  
WITH A **FAMILY FARM** THAT WILL HELP  
LONG INTO THE FUTURE

Given in MEMORY of

Given in HONOR of

GIVEN BY:

Amount of Donation: \_\_\_\_\_

*If your gift is in honor of a friend or loved one, it's easy to tell them about it. Come by the office and choose a greeting card to send to them.*

## Quilts to California

### The Situation:

A request from California Lutheran University in Thousand Oaks, California: care for students seriously impacted by the effects of the recent, nearby, and expansive Woolsey Fire and the mass murders at Borderline Barr and Grill. The university campus was not damaged, but the students are living with the effects daily.

### Our Response:

Emanuel's Quick Quilters, in cooperation with other Lutheran World Relief quilters, have sent 5 quilts to demonstrate our support for the college students.

### What you can do:

#### Pray:

Please pray for the students and their communities that have been touched by these tragedies. May God's healing presence give them peace and hope in their time of need.

#### Give:

The quilts from Emanuel's – and many more - have been created with donations of fabrics and monies for the purchase of batting. Thank you!

#### Connect:

To learn more about ELCA response to disasters:

- Sign up to receive Lutheran Disaster Response alerts via <https://listserv.elca.org>
- Like Lutheran Disaster Response on Facebook and follow @ELCALDR on Twitter.

# κῦδος (KUDOS)

Dear Members of Emanuel's Lutheran Church,

I wish to thank you for your strong support of the recent fundraiser to benefit The Guadalupe Valley Counseling Center.

The fundraiser was a tremendous success and will help us to continue to provide mental therapy and emotional support to families that are going through challenging situations in life.

Our staff of counselors are lead by Director, Dr. Nicholas Wilkens, Ph.D. and include Richard Laosa, Rebecca Vela and several graduate interns from St. Mary's University.

Our clients are never turned away due to inability to pay and this is where your continued support and generosity continues to be so very important to our mission.

My Board of Directors consist of Marty Keil of St. Andrew's Episcopal, Teri Nash of First United Methodist, Liz Sedlacek of St. James Catholic, Jes Maples of Christ Lutheran of Elm Creek, James Schriewer of Friedens Church, Dennis Sagebiel of Emanuel's Lutheran, B.J. Chambers of Faith Lutheran, Candi Andrews of Faith Lutheran, Janet Wolber of Faith Lutheran, Paul Neuhooff of Mosaic Community, Nancy Hartfiel of Spirit of Joy Lutheran, Kristin Kneupper of Spirit of Joy Lutheran, Liz Taft of First Presbyterian and Cross Church (currently selecting a new representative).

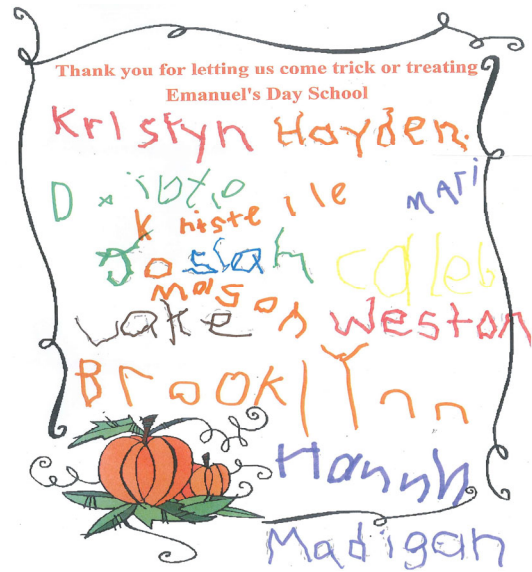
I wish to express a special than you to Pastor Marcus for his repeated announcements of the event, Office Administrator, Sherry Hardwick for her repeated advertising in our church news letter, and to Emanuel's Ladies Aid for their continued support by their donation of a beautiful raffle item.

Sincerely,

Doug Parker, R.Ph.  
President, Board of Directors  
The Guadalupe Valley Counseling Center

I would like to thank all Emanuel's members for their prayers, cards, food, and phone calls during my wife's illness. I especially would like to thank Pastor Marcus and Donna Simmons for all the support given to me during Aline's passing.

May God bless you all,  
Albert Lindemann and family



I would like to say Thank You for your prayers ... The cards and telephone calls were so much appreciated. What a blessing you all are to me! Special thanks to Pastor Marcus, my Sunday School Class, Ladies Aid, Tom Engler and Choir, Donna Simmons, FF&F, Cheryl Sikich, Dennis Sagebiel, and so many more!

Thanks- it seems like such a small word for all you have done!

Evelyn Doege

The Salvation Army- Seguin Unit expresses our gratitude for your generous gift to assist those in need. Thank you for your continued support!

Shout out to Emanuel's Amazing Bulletin Folders! Thursday mornings are never dull at Emanuel's. The office staff loves you. If you see one of these shining faces on Sunday morning, give them a big hug for making worship so easy for everyone.





## EMANUEL'S LUTHERAN CHURCH

206 North Travis Street  
Seguin, Texas 78155-5635

### IN THIS ISSUE

A Note from the Pastor	1
Preparing for Christmas	2-3
Spotlight on Guadalupe Valley Habitat for Humanity	4-5
Council Report	6
Stewardship Corner	7
Book Review: <i>The Farm</i> by Wendell Berry	8
Spotlight on Emanuel's Music Ministry	9
Spotlight on Yesterday 1995 article from the <i>Seguin Gazette-Enterprise</i>	10-11
Spotlight on Today & Tomorrow	12-13
Liturgical Calendar	13
Emanuel's in the News	14
Kūδος (Kudos)	15

**The Acorn** is the Quarterly Newsletter of Emanuel's Lutheran Church. Each edition highlights who we are as a congregation yesterday, today, and tomorrow. Articles feature partners in ministry, stories from the archives, current events, and other news in a deeper, richer context to help continually define mission and ministry at Emanuel's. Please share your submissions/suggestions for *The Acorn* at [info@emanuels-seguin.org](mailto:info@emanuels-seguin.org).

**Weekly News** is an electronic e-blast of announcements taken from the weekly Sunday bulletin with enhanced graphics and hyperlinks for even more information. Not on the mailing list? Share your current email address at [info@emanuels-seguin.org](mailto:info@emanuels-seguin.org).

**[www.emanuelslutheranchurch.com](http://www.emanuelslutheranchurch.com)** is our website. Current events are featured on the home page- just click on the graphics for details. The Worship Leader Schedule, Church Calendar, Christian Education Offerings, and Staff Contacts are updated on this site.

**Bulletin Boards and Narthex Screen** also share information about events happening at Emanuel's. If you would like to post a flyer or have one created, check with the church office.

**Facebook** is another helpful communication platform. Look for our several small groups and posted events that are easy to share with friends.

Emanuel's Lutheran Church    206 N. Travis St.   |   Seguin, Texas 78155  
Phone: (830) 379-5046   |   Fax: (830) 379-7581   |   E-mail: [info@emanuels-seguin.org](mailto:info@emanuels-seguin.org)  
Website: [www.emanuelslutheranchurch.com](http://www.emanuelslutheranchurch.com)